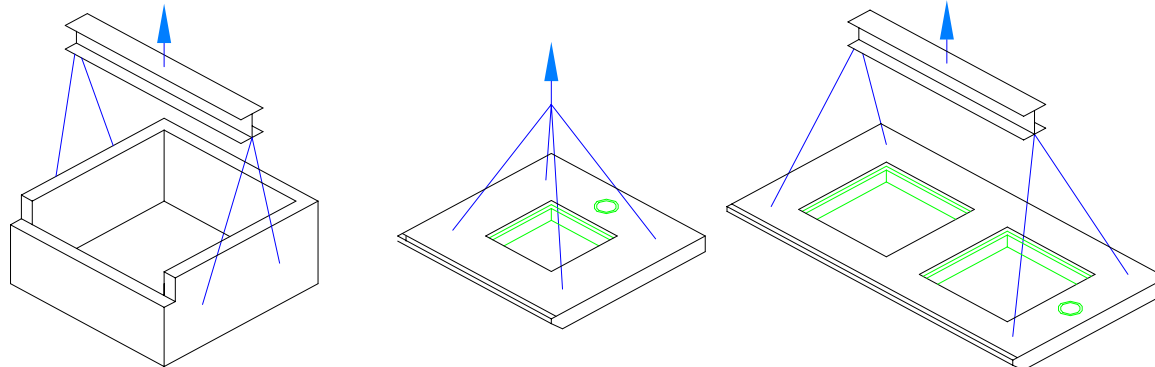


Americast Filterra™ Weights and Lifting Details

		Box Only		UD Stone + Media			Top Only		Box + Top		Box + Media		Box + Media + Top		*Spreader Bar	
		Pounds	Tons	Pounds	Tons	CY	Pounds	Tons	Pounds	Tons	Pounds	Tons	Pounds	Tons	Min	Max
4'-0" Throat	4x6	7,440	3.72	5,167	2.58	2.00	2,819	1.41	10,259	5.13	12,607	6.30	15,426	7.71	5.00 ft	7.50 ft
	4x8	9,145	4.57	6,890	3.44	2.67	3,829	1.91	12,974	6.49	16,035	8.02	19,864	9.93	5.00 ft	7.50 ft
	4x12	12,555	6.28	10,334	5.17	4.00	5,231	2.62	17,786	8.89	22,889	11.44	28,120	14.06	5.00 ft	7.50 ft
6'-0" Throat	6x4	7,285	3.64	5,167	2.58	2.00	3,417	1.71	10,702	5.35	12,452	6.23	15,869	7.93	5.50 ft	7.50 ft
	Std 6x6	9,300	4.65	7,751	3.88	3.00	4,221	2.11	13,521	6.76	17,051	8.53	21,272	10.64	7.00 ft	9.00 ft
	6x8	11,315	5.66	10,334	5.17	4.00	5,121	2.56	16,436	8.22	21,649	10.82	26,771	13.39	7.00 ft	9.00 ft
	6x10	13,330	6.67	12,918	6.46	5.00	6,545	3.27	19,875	9.94	26,248	13.12	32,793	16.40	7.00 ft	9.00 ft
6x12	15,345	7.67	15,502	7.75	6.00	6,825	3.41	22,170	11.09	30,847	15.42	37,672	18.84	7.00 ft	9.00 ft	
7'-0" Throat	7x13	17,593	8.80	19,592	9.80	7.58	10,106	5.05	27,699	13.85	37,185	18.59	47,291	23.65	8.00 ft	10.00 ft
8'-0" Throat	8x4	8,835	4.42	6,890	3.44	2.67	3,787	1.89	12,622	6.31	15,725	7.86	19,511	9.76	5.50 ft	7.50 ft
	8x6	11,160	5.58	10,334	5.17	4.00	5,100	2.55	16,260	8.13	21,494	10.75	26,594	13.30	7.50 ft	9.50 ft
10'-0" Throat	10x6	13,020	6.51	12,918	6.46	5.00	6,503	3.25	19,523	9.76	25,938	12.97	32,441	16.22	7.50 ft	9.50 ft
12'-0" Throat	12x4	11,935	5.97	10,334	5.17	4.00	5,146	2.57	17,081	8.54	22,269	11.13	27,415	13.71	5.50 ft	7.50 ft
	12x6	14,880	7.44	15,502	7.75	6.00	6,762	3.38	21,642	10.82	30,382	15.19	37,143	18.57	7.50 ft	9.50 ft
13'-0" Throat	13x7	17,593	8.80	19,592	9.80	7.58	10,042	5.02	27,635	13.82	37,185	18.59	47,227	23.61	8.50 ft	10.50 ft

* BOX AND TOP MUST BE LIFTED SEPARATELY



* A 7.50 ft spreader bar is suitable for all sizes shown.